

Casa Casatoriilor

Ploiesti



February 2009

Ploiesti

- 230,000 inhabitants
- Main roads: E 60, DN 1, DN 72 and in the future A 3, A 5
- Main industries: oil and petroleum, machines, chemical, food, tobacco, textile, etc.



February 2009

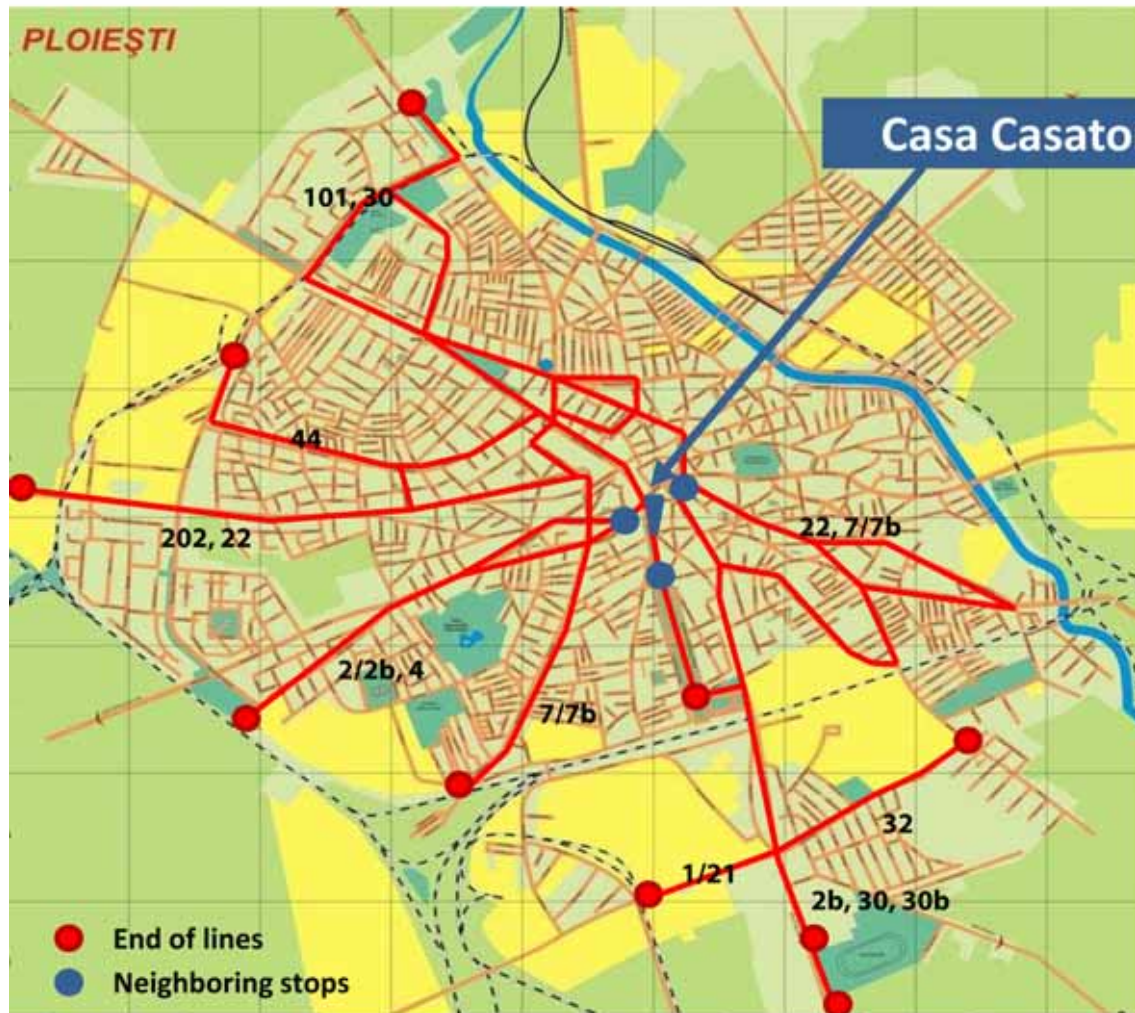
Casa Casatoriilor

- Rentable area: ca 915 sq m
- Structure: BS + GF + 1 FL
- Vicinities: mixed use
- Location: High Central
- Built in 1850
- Architectural and historical monument, landmark building
- Refurbishment start – Q1 2009



February 2009

Public transport & Location



February 2009

Plans

MEZANINE

USABLE AREA

- USABLE SPACE
- VERTICAL CIRCULATION



BASEMENT

USABLE AREA

- USABLE SPACE
- VERTICAL CIRCULATION

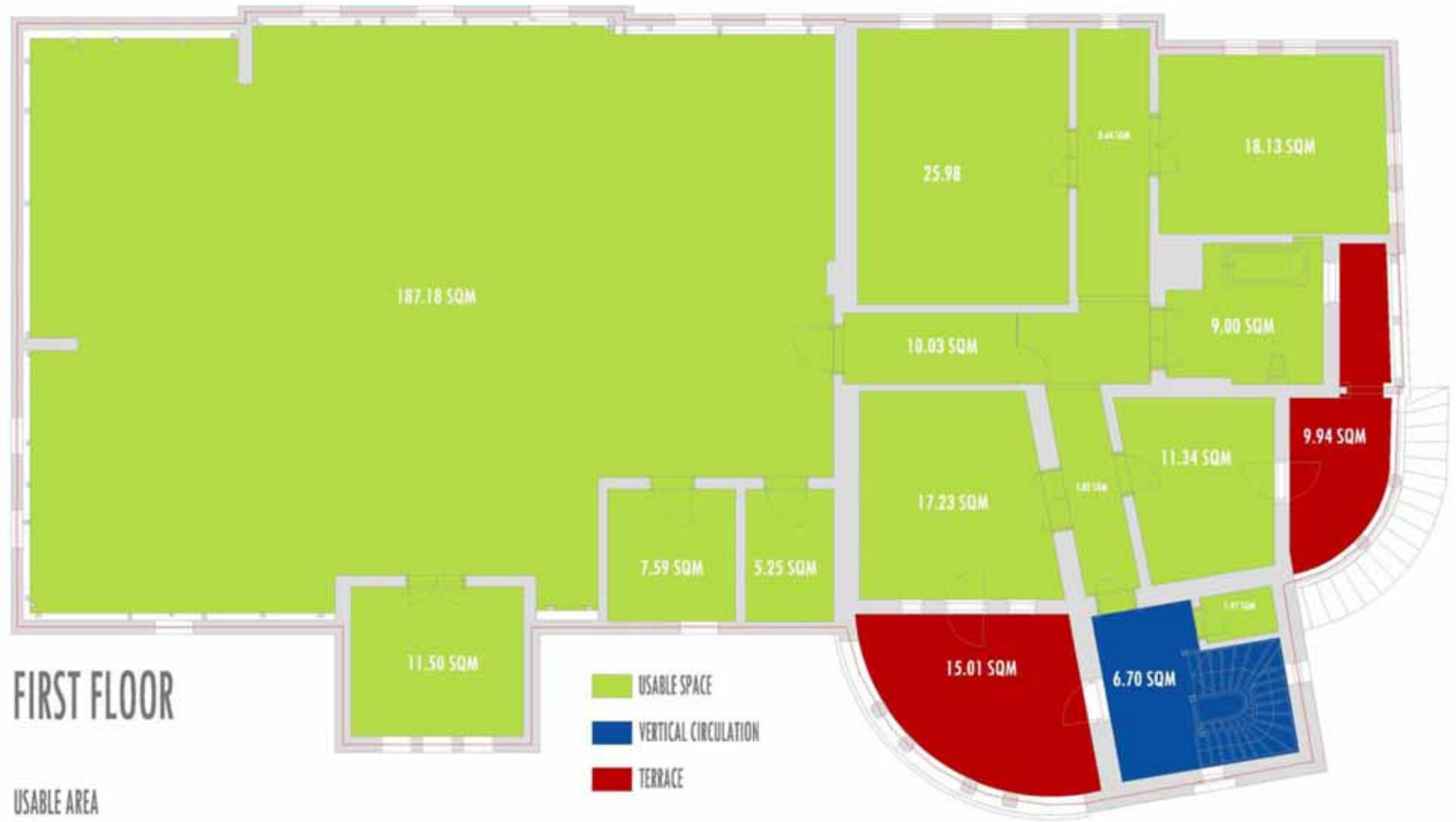


Plans



February 2009

Plans



FIRST FLOOR

USABLE AREA

February 2009

Pictures – façades

